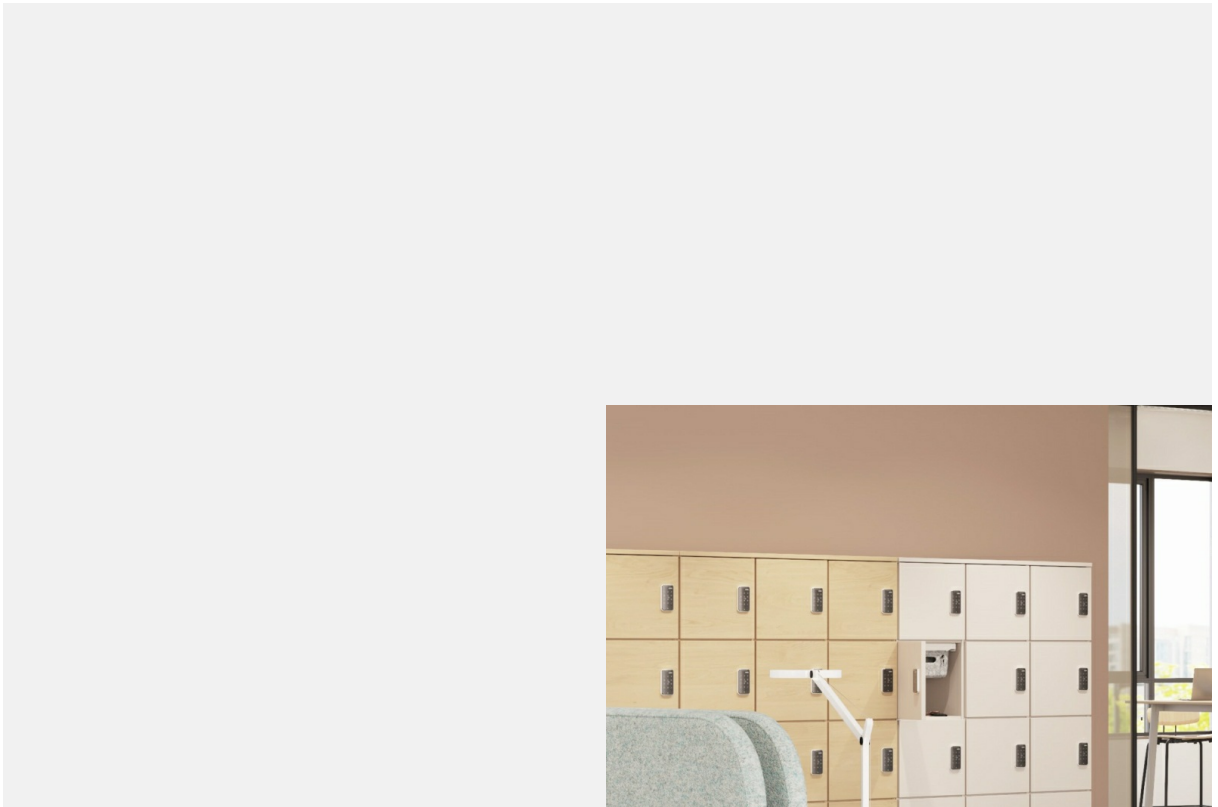


Locker cabinet



Due to the ever-advancing establishment of future-oriented office concepts and the reduction of permanently assigned workstations, the demand for locker cabinets is increasing.



The individual space of the permanently assigned workstation is replaced by a personal locker. Lockers can be placed freely in the room, enclosed or planned in conjunction with checkrooms. In addition to lockable storage space, they serve to structure rooms and provide visual and acoustic screening.



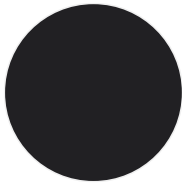
Product features

- Visible back wall fabric selectable
- Selectable in depth 450 or 600 mm
- Body and doors 19 mm thick
- Different locking systems available: Lock with key, combination lock, RFID, rotary lock with key
- Interior surfaces of the lockers in carcass finish
- Surface of cover plate optionally selectable differently to carcass
- Front doors optionally selectable differently to carcass
- Door hinges right or left selectable
- Opening angle of doors: 110
- With plinth or height compensation screws selectable
- Cabinets as standard with 16 mm flush with carcass, visible rear panel grooved on all sides
- Height compensation screws recommended for integration in paravento hub
- Depth of 450 mm recommended for integration in paravento hub
- Large selection of surfaces and textiles

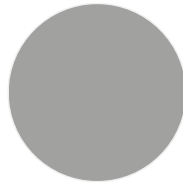
Dimensions

Colors and materials

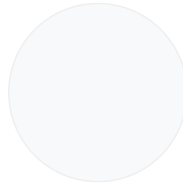
Base



graphite black
(RAL 9011)

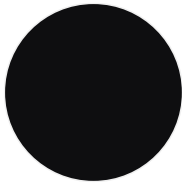


silver metallic



light white
(RAL 9016)

frames



Jet Black

Surfaces: Genuine wood



maple



maple, oiled



whitewashed
oak



whitewashed
oak, oiled



oak



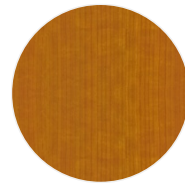
oak, oiled



beech



cherry wood



cherry wood,
oiled



walnut



walnut, oiled



smoked oak



black oak

Surfaces: Melamine



atlas white



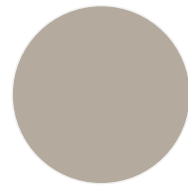
cream white



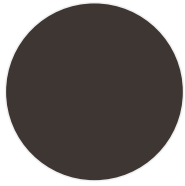
soft white



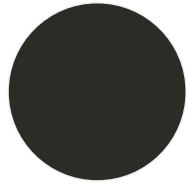
light grey



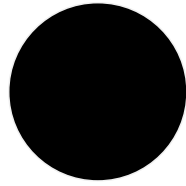
Silk grey



grey brown



graphite



black



maple trim



oak light



beech light

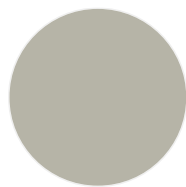
Surfaces: lacquer



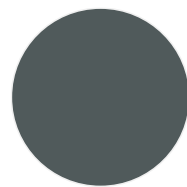
traffic white
(RAL 9016)



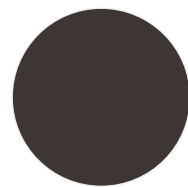
cream white
(RAL 9001)



silk grey
(RAL 7044)



iron grey
(RAL 7011)



grey brown
(RAL 8019)

