

ophelis nest

Everyday working life is varied: Whether concentrated individual work, video conferences, discretion and retreat or (creative) exchange with colleagues – modern workplaces must be able to cope with a variety of requirements.

ophelis nest, created by the Berlin design studio Hidden Fortress, is based on the basic idea that users can flexibly determine the degree of visual and acoustic screening at their workplace.

nest enables employees to shield their workplace individually, temporarily and with little effort according to their current needs.

The structure of **nest** consists of only two components: absorber and corner module. The two corner modules made of moulded oak are the statically supporting components of the system and form – connected to the table – the supports for the absorbers. They can be easily assembled and disassembled.

The rail, a rounded guide rod integrated into the corner modules, holds the absorber modules and provides support so that they are stable and shock-resistant without the need for further fixing to the desk.

The corner modules are made of moulded wood and are available in oiled oak or lacquered in 5 different colors. Many screening situations can be designed with ophelis nest.

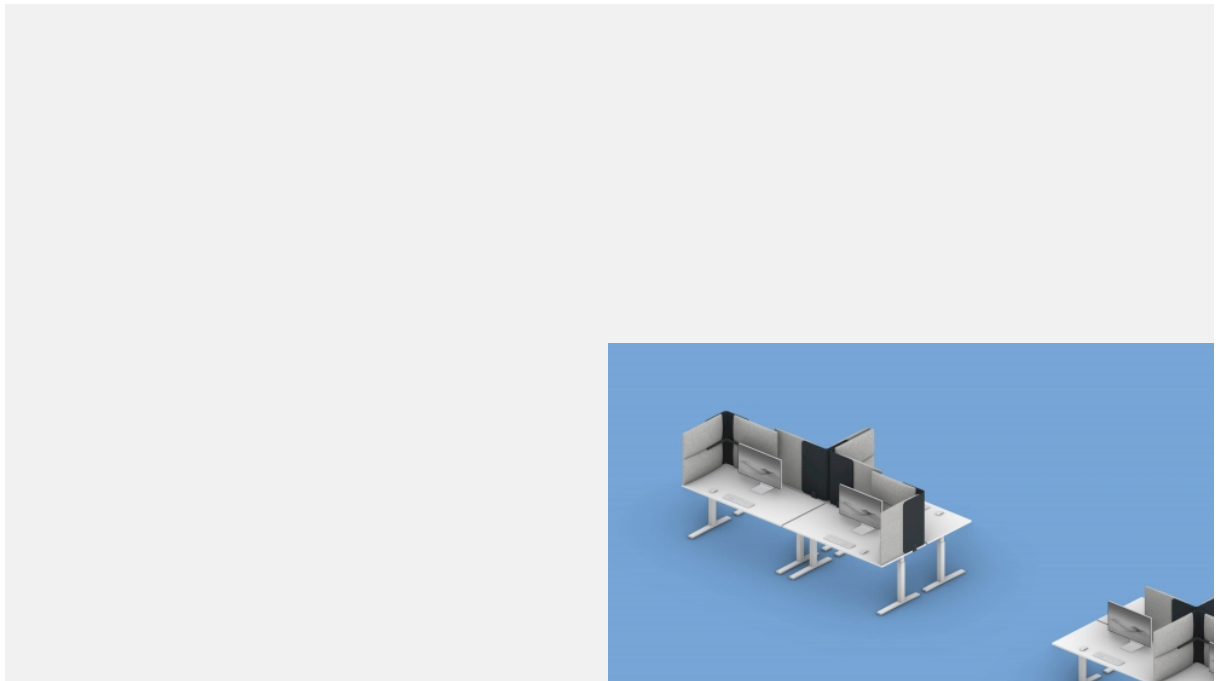
With their curved volume, the absorber modules form a contrast to the simple corner modules and create a comfortable and homely atmosphere. The textile upholstery of the absorbers allows individual and homely color worlds. The absorbers can be easily and smoothly extended by the user up to 15 centimeters beyond the edge of the table to provide a screen from the neighbor. In this way, nest can be used to create an environment for increased concentration, which is also visually perceptible to the person sitting next to it. A large textile collection is available for the absorbers.

For even more peace and quiet, nest offers the possibility to put up an acoustically effective roof.

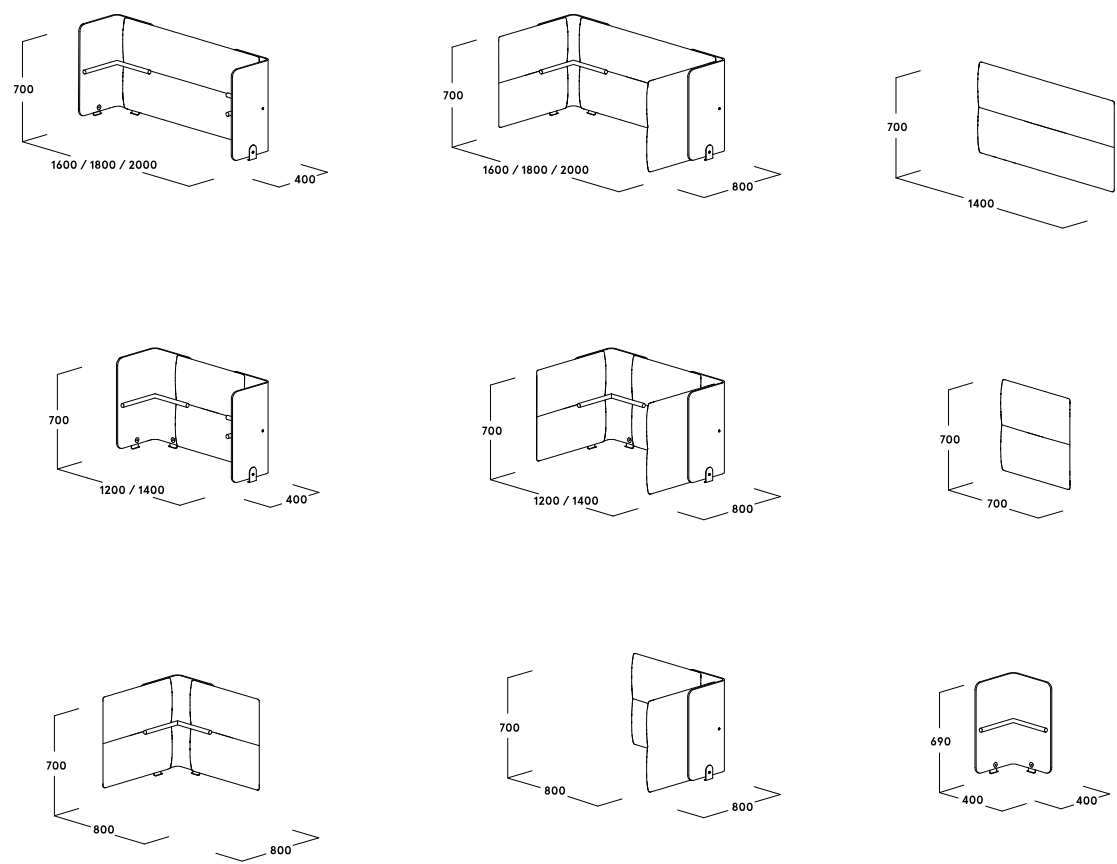
ophelis nest is structured in such a way that both temporary and permanent solutions can be operated. The system attaches great importance to flexible use. It offers the option of being assembled and disassembled by the user himself, simply, thus underlining the self-determination of the working environment.

The system requires only two different modules (corner module and absorber module) and can be used at any workstation.

Configurations



Dimensions



Colors and materials

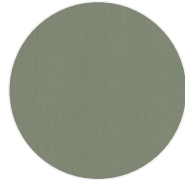
Moulded wood veneer



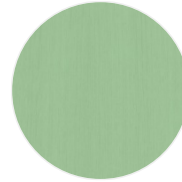
Oak, oiled



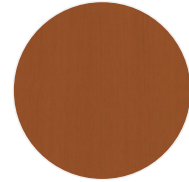
Oak veneer, silk
grey lacquered
(RAL 7044)



Oak veneer,
cement grey
lacquered
(RAL 7033)



Oak veneer,
white green
lacquered
(RAL 6019)

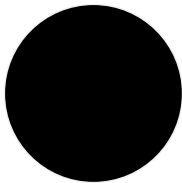


Oak veneer,
orange brown
lacquered
(RAL 8023)



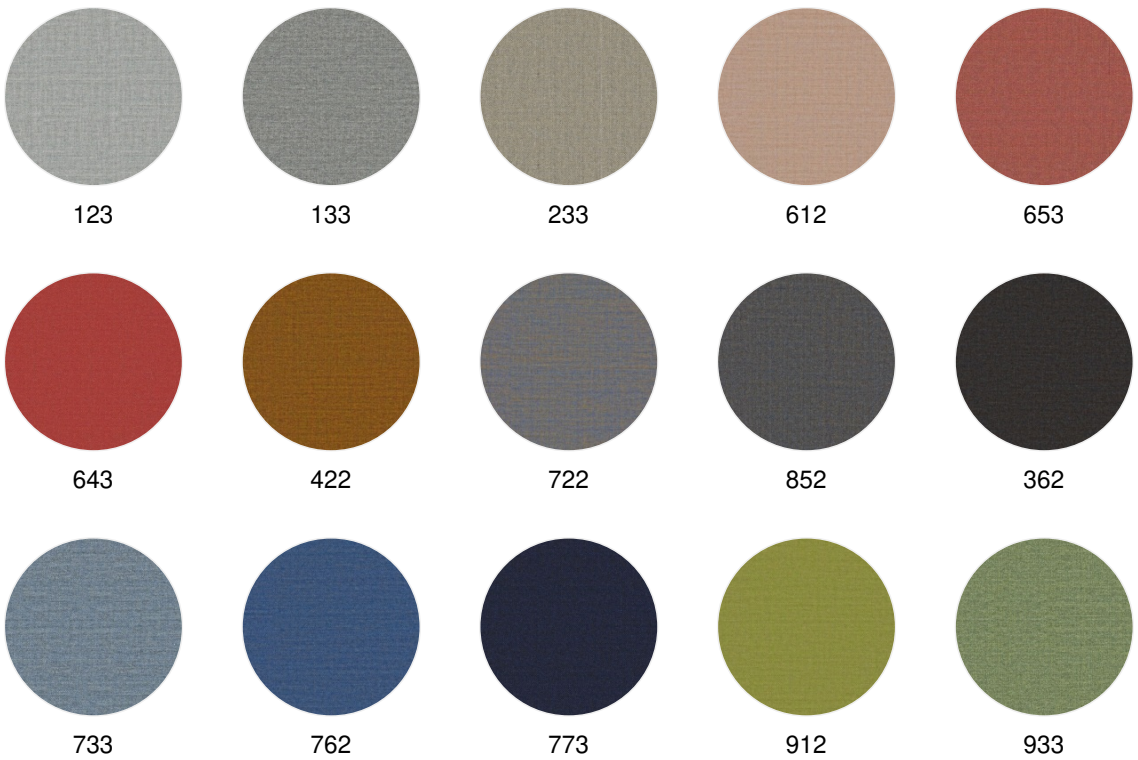
Oak veneer,
black grey
lacquered
(RAL 7021)

Rail

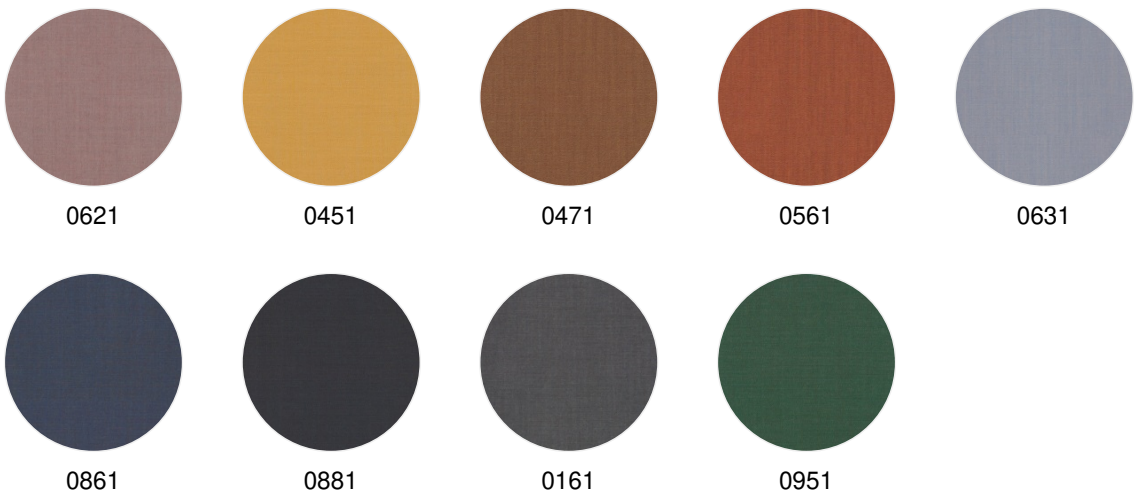


black

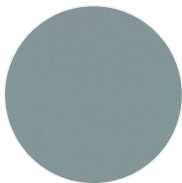
Fabric: Kvadrat Remix 3 (PG 21)



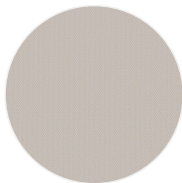
Fabric: Kvadrat Atlas (PG 21)



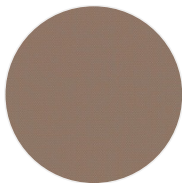
Fabric: Kvadrat Steelcut Trio 3 (PG 22)



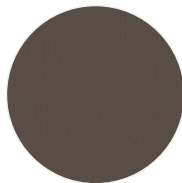
713



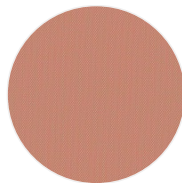
213



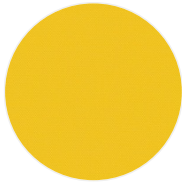
426



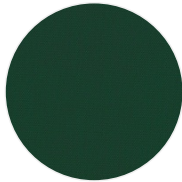
276



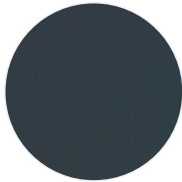
515



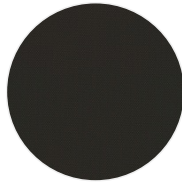
446



976

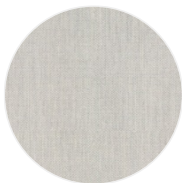


883

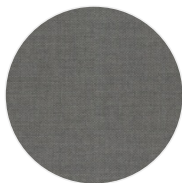


383

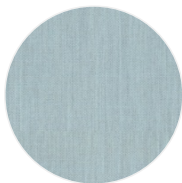
Fabric: Kvadrat Fiord 2 (PG 22)



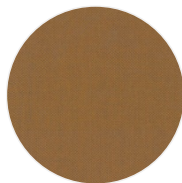
101



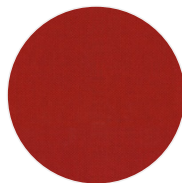
151



721



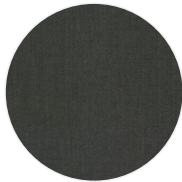
451



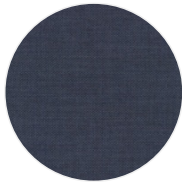
571



581



971

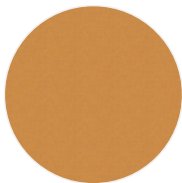


771



981

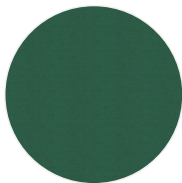
Fabric: Kvadrat Field 2 (Functional textiles) (BS 5852 Crib 5) (PG 22)



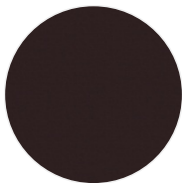
0463



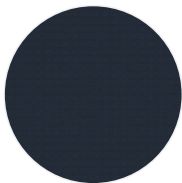
0643



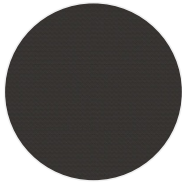
0963



0693



0782



0182

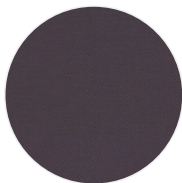
Fabric: Kvadrat Febrik Plecto (PG 23)



0224



0564

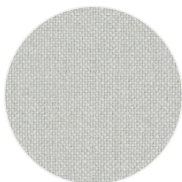


0654

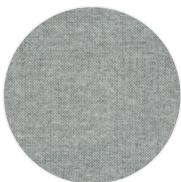


0984

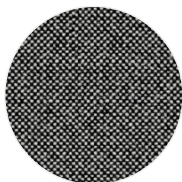
Fabric: Kvadrat Hallingdal 65 (PG 23)



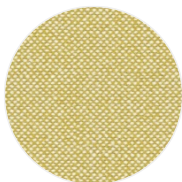
0103



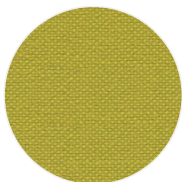
0116



0166



0407



0420

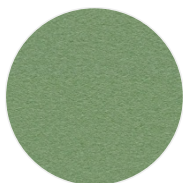


0687

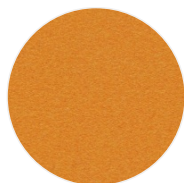


0764

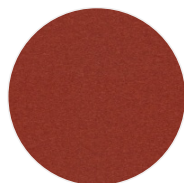
Fabric: Kvadrat Divina 3 (PG 23)



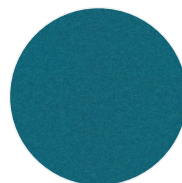
0856



0444

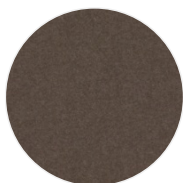


0584



0893

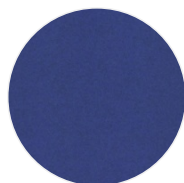
Fabric: Kvadrat Divina Melange 3 (PG 23)



0260

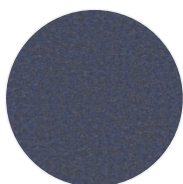


0567



0747

Fabric: Kvadrat Divina MD (PG 23)

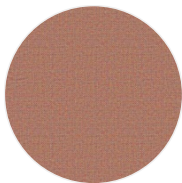


0753

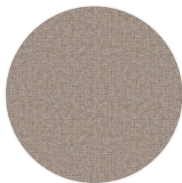


0813

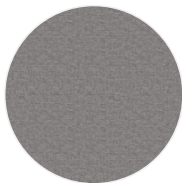
Fabric: Camira Carlow (PG 20)



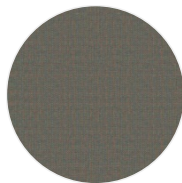
CLW06



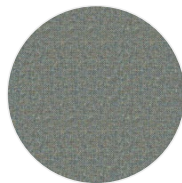
CLW04



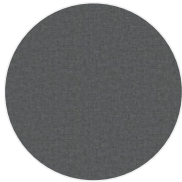
CLW01



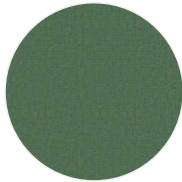
CLW17



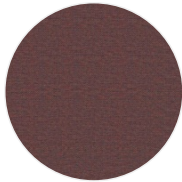
CLW09



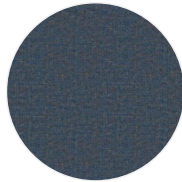
CLW23



CLW20



CLW08



CLW12

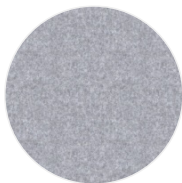
Fabric: Camira Blazer (PG 21)



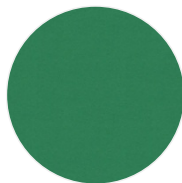
CUZ2Q



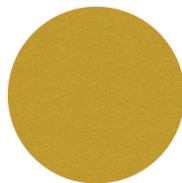
CUZ28



CUZ1E



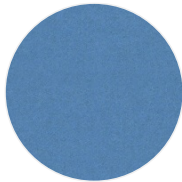
CUZ3A



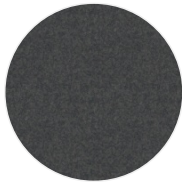
CUZ2W



CUZ21

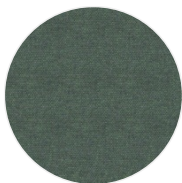


CUZ1V

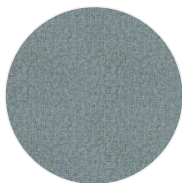


CUZ67

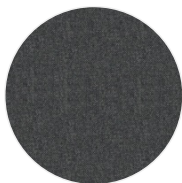
Fabric: Camira Mainline Flax (PG 21)



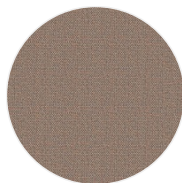
MLF32



MLF22

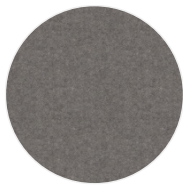


MLF16

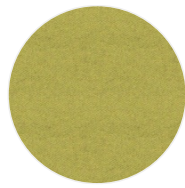


MLF23

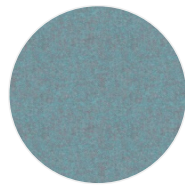
Fabric: Camira Synergy (PG 21)



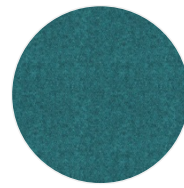
LDS35



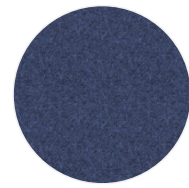
LDS46



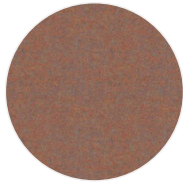
LDS56



LDS59



LDS62



LDS76



LDS77

Wall brackets or attachments on the storage space serve as a garage for unused absorber modules and thus improve the room acoustics. Alternatively, the absorbers can also be temporarily stored on a mobile caddy and are thus acoustically effective in the room.

