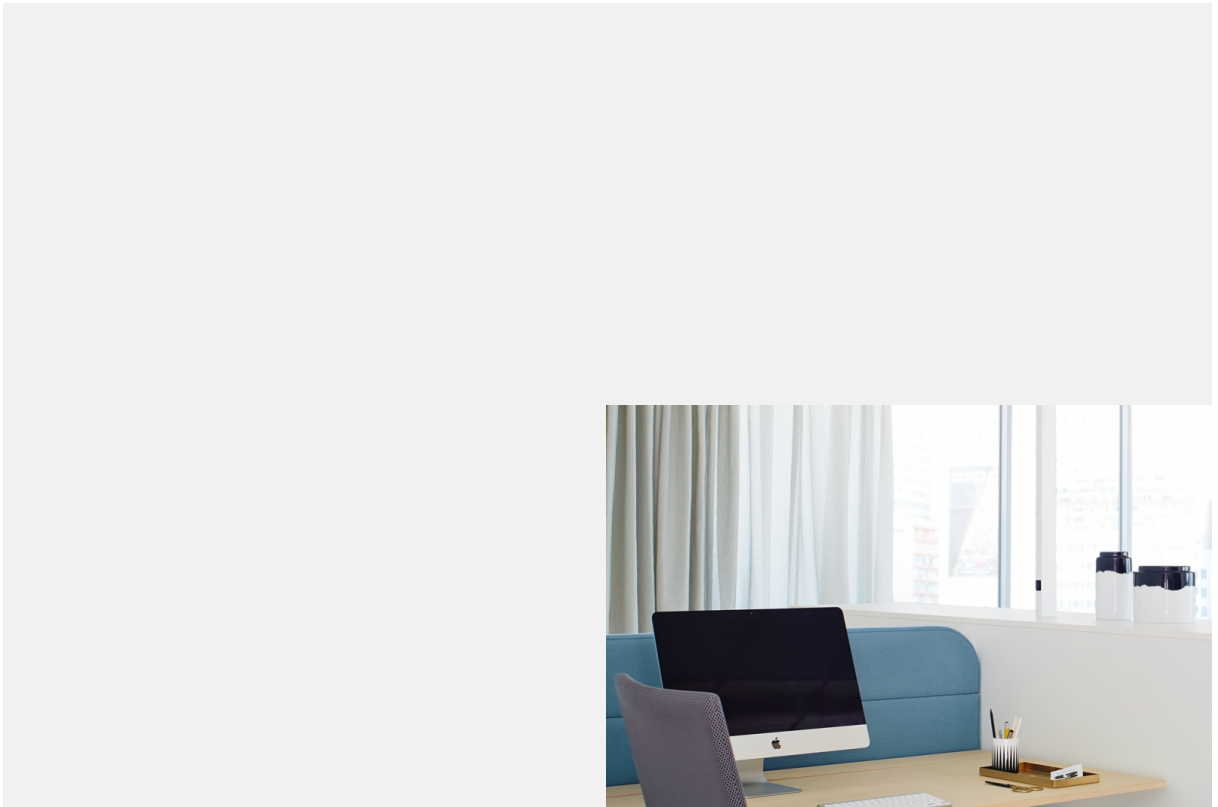


orga.cube



orga.cube is an apothecary cabinet that serves as a room-dividing storage space element while enabling visual and acoustic shielding in open space offices. It facilitates flexible use of the workstation and allows open space landscapes to be designed as feel-good offices.



With the orga.cube concept, ophelis reduces the desire for privacy and shielding in open space offices to a common denominator with storage space and spatial structuring: A private withdrawal area for undisturbed working can be created by opening the orga.cubes.

Product features

- Storage solution with apothecary pullout
- Acoustic and visual shielding when open
- Acoustically effective as a highly efficient acoustic absorber
- Direct access storage and more legroom under the desk
- Full-fledged container function and storage directly at the workstation for open office landscapes
- Concealed top guide

Variants:

- Can be used on one side (right/left) with pullout utensil tray and lockable private compartment
- Accessible from both sides: vertical division, allows access from two adjacent workstations
- Pullout in single or double garage (especially for workstations arranged in blocks, offers seamless, tidy shielding)

Power supply/lighting (optional):

- Possibility of routing cables to the desk through interior cable channel and side cable outlets
- Interior power supply: Sockets integrated into the upper compartment
- Integrated lamps for one to four workstations

Certificates

- Quality Office
- GS mark
- Blue Angel UZ 38

Colors and materials

Surfaces: Genuine wood



maple



maple, oiled



whitewashed
oak



whitewashed
oak, oiled



oak



oak, oiled



beech



cherry wood



cherry wood,
oiled



walnut



walnut, oiled



smoked oak



black oak

Surfaces: Melamine



atlas white



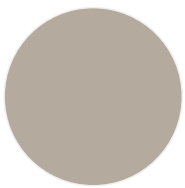
cream white



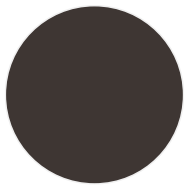
soft white



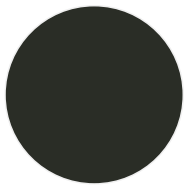
light grey



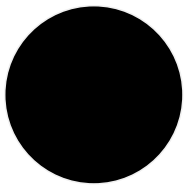
Silk grey



grey brown



graphite



black



maple trim



oak light



beech light

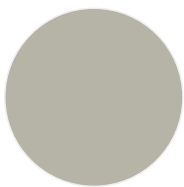
Surfaces: lacquer



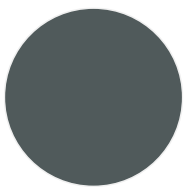
traffic white
(RAL 9016)



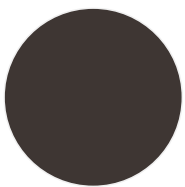
cream white
(RAL 9001)



silk grey
(RAL 7044)



iron grey
(RAL 7011)



grey brown
(RAL 8019)

Certificates

