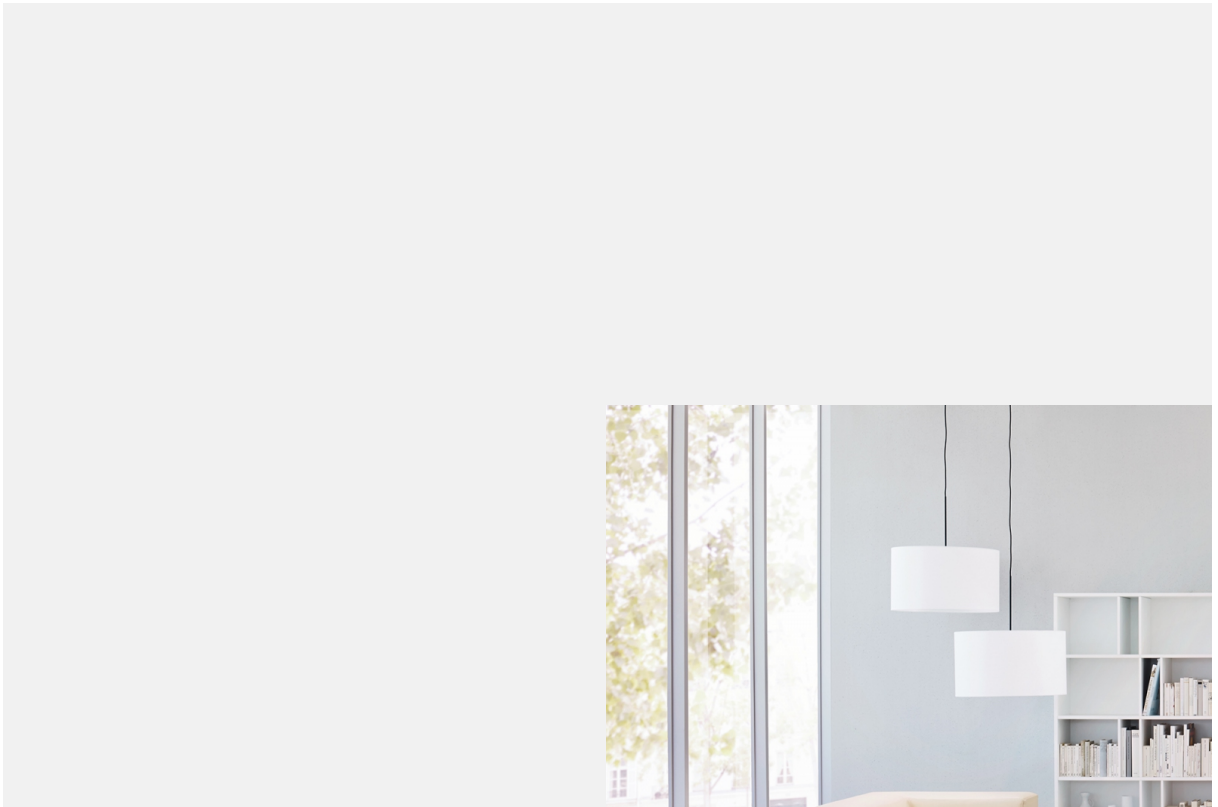


# Facett shelving system



As a standalone shelving system that matches S series accessory furniture, **facett** brings new diversity to office interior design.

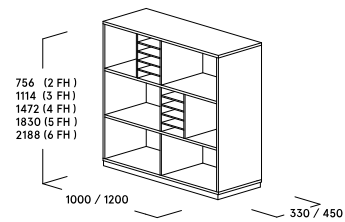
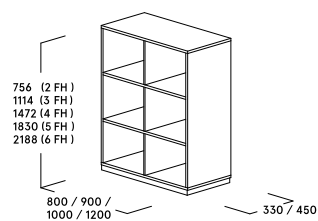
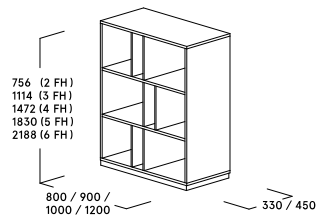
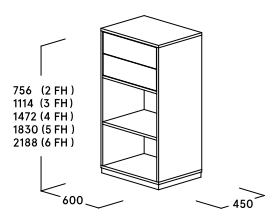


Creating a connection between the functionality of modern office organisation and the requirements of contemporary architecture: the facett shelving system by ophelis perfectly embodies these requirements. This free-standing shelving system features vertical divisions in customisable colours which serve both as design features and as stabilising elements. This allows a variety of arrangements and removes the need for middle partitions. The dividers can be used as folder compartments or book supports.

# Product features

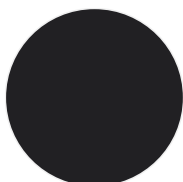
- Combines the functionality of modern office organisation with the demands of contemporary architecture
- Eliminates end-to-end middle partitions
- Colourful vertical dividers serve as a design feature and offer stability
- The dividers also offer additional benefits as folder compartments, book supports or intermediate storage compartments
- With back panel as standard – can be placed freely within the room; therefore, it is also suitable for zoning in open space offices
- Fixed shelves
- No open rows of holes, two-dimensional design
- Dimensionally compatible with all S Series cabinets
- Pull-outs with push-to open opening
- Certificates
  - Blue Angel UZ 38

# Dimensions

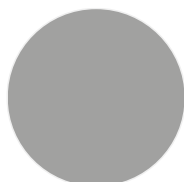


# Colors and materials

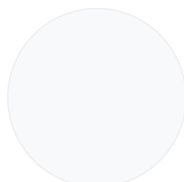
## Base



graphite black  
(RAL 9011)



silver metallic



light white  
(RAL 9016)

## Surfaces: Genuine wood



maple



maple, oiled



whitewashed  
oak



whitewashed  
oak, oiled



oak



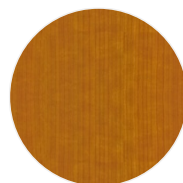
oak, oiled



beech



cherry wood



cherry wood,  
oiled



walnut



walnut, oiled



smoked oak



black oak

**Surfaces: Melamine**



atlas white



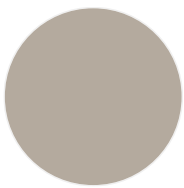
cream white



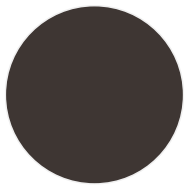
soft white



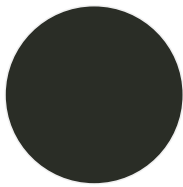
light grey



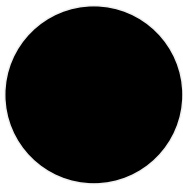
Silk grey



grey brown



graphite



black



maple trim



oak light



beech light

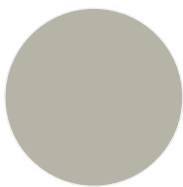
**Surfaces: lacquer**



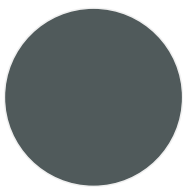
traffic white  
(RAL 9016)



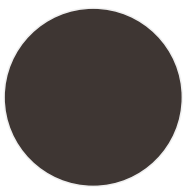
cream white  
(RAL 9001)



silk grey  
(RAL 7044)



iron grey  
(RAL 7011)



grey brown  
(RAL 8019)

# Certificates



[www.blauer-engel.de/uz38](http://www.blauer-engel.de/uz38)