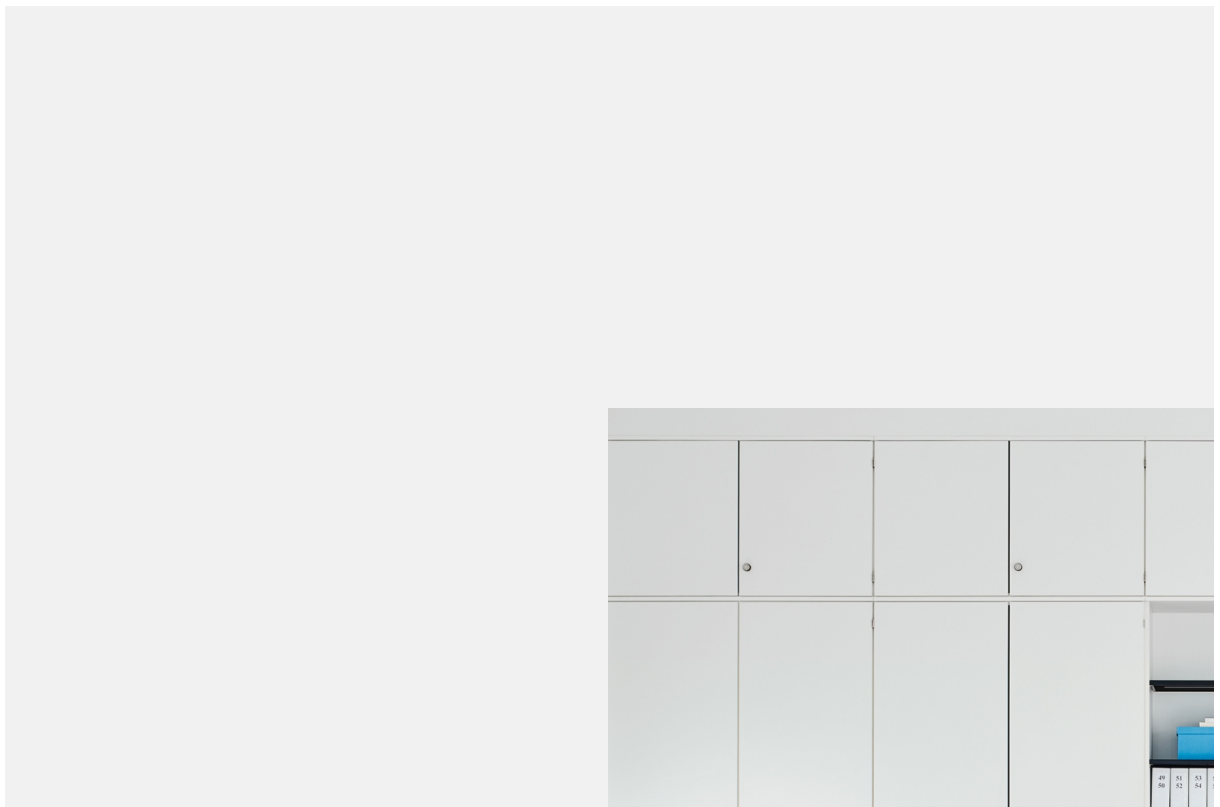


Carcass construction wall cabinet



With the **wall cabinet system** in carcass construction design, prefabricated elements are connected to wall cabinets on site. The many options and interiors fixtures offer office storage space for a wide variety of applications.



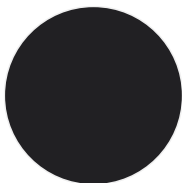
With the wall cabinet system in carcass construction design, ophelis gives you an organisational framework that can be customised and developed according to the specific needs at hand. There are numerous types of elements available, including acoustically effective variants that can be freely combined.

Product features

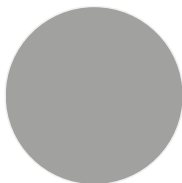
- The design principle enables flexible solutions which can be customised to function as a single cabinet or wall cabinet
- In addition to double door cabinets, there are elements with glass doors, combined elements with double doors and vertical drawers, open elements, 45 and 90-degree corner elements, corner elements with rounded shelves and vertical shutter elements
- Dimensionally compatible with the S Series accessory furniture
- Ceiling and wall veneers are optional
- Certificates
 - Blue Angel UZ 38

Colors and materials

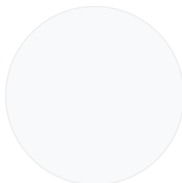
Base



graphite black
(RAL 9011)



silver metallic



light white
(RAL 9016)

Surfaces: Genuine wood



maple



maple, oiled



whitewashed
oak



whitewashed
oak, oiled



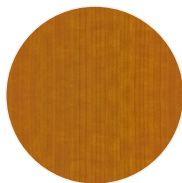
oak



oak, oiled



beech



cherry wood



cherry wood,
oiled



walnut



walnut, oiled



smoked oak



black oak

Surfaces: Melamine



atlas white



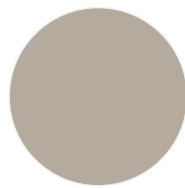
cream white



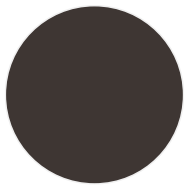
soft white



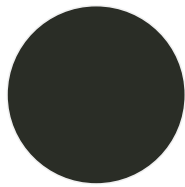
light grey



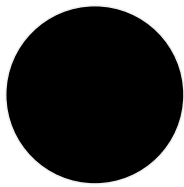
Silk grey



grey brown



graphite



black



maple trim



oak light



beech light

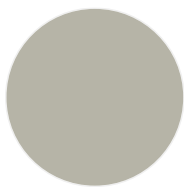
Surfaces: lacquer



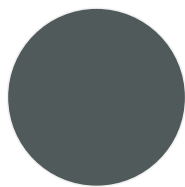
traffic white
(RAL 9016)



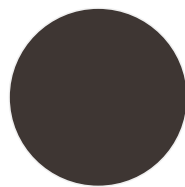
cream white
(RAL 9001)



silk grey
(RAL 7044)



iron grey
(RAL 7011)



grey brown
(RAL 8019)

Certificates



www.blauer-engel.de/uz38