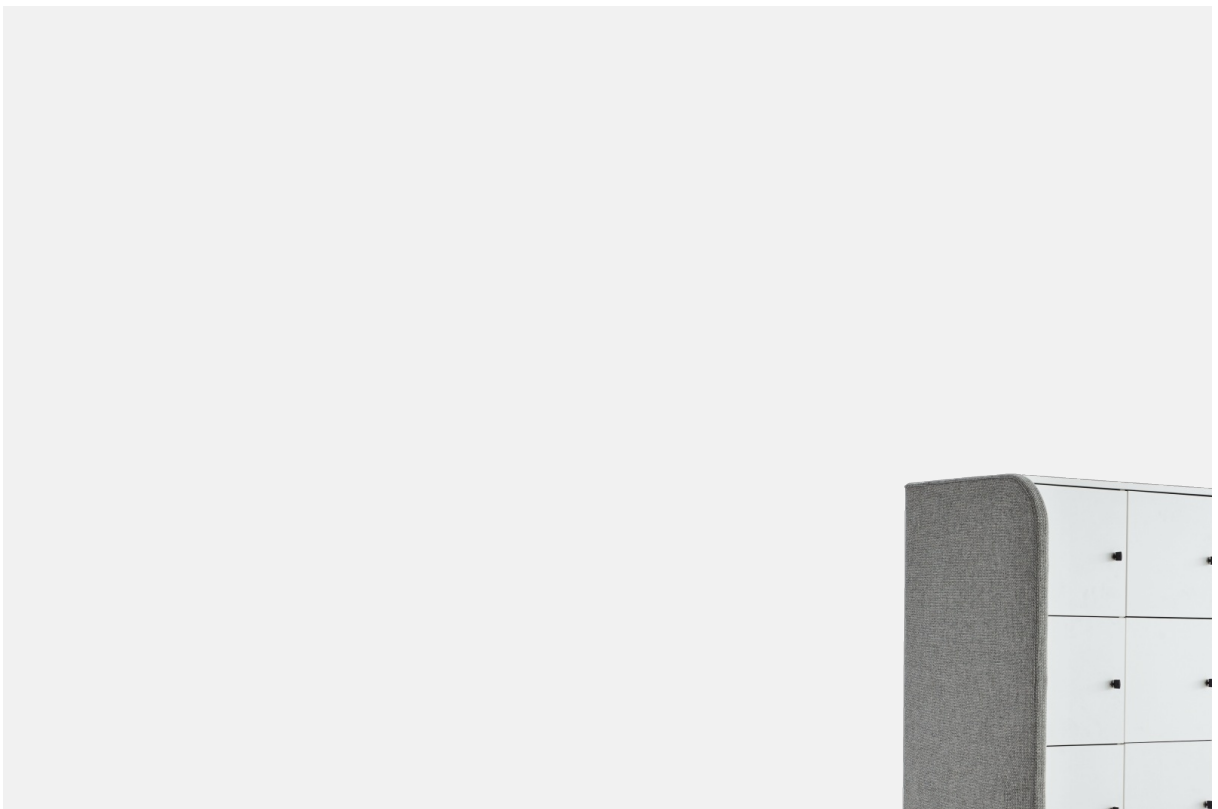


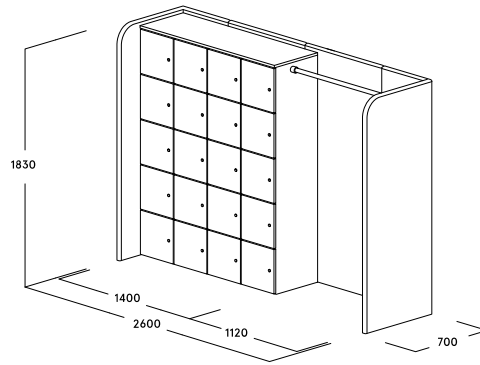
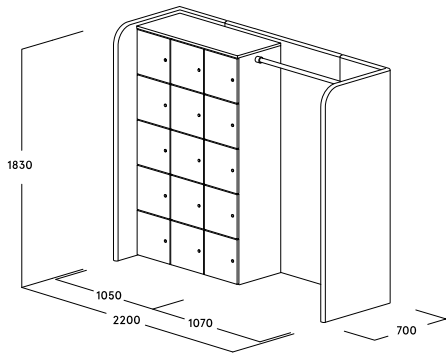
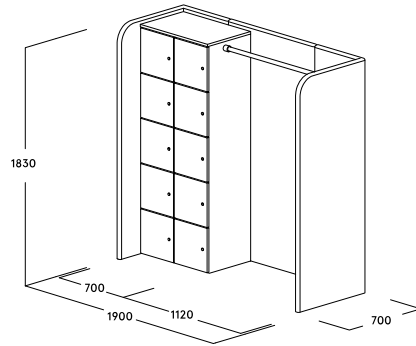
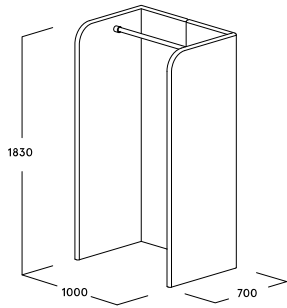
Systeme de cloisons paravento hub Vestiaire



Caractéristiques du produit

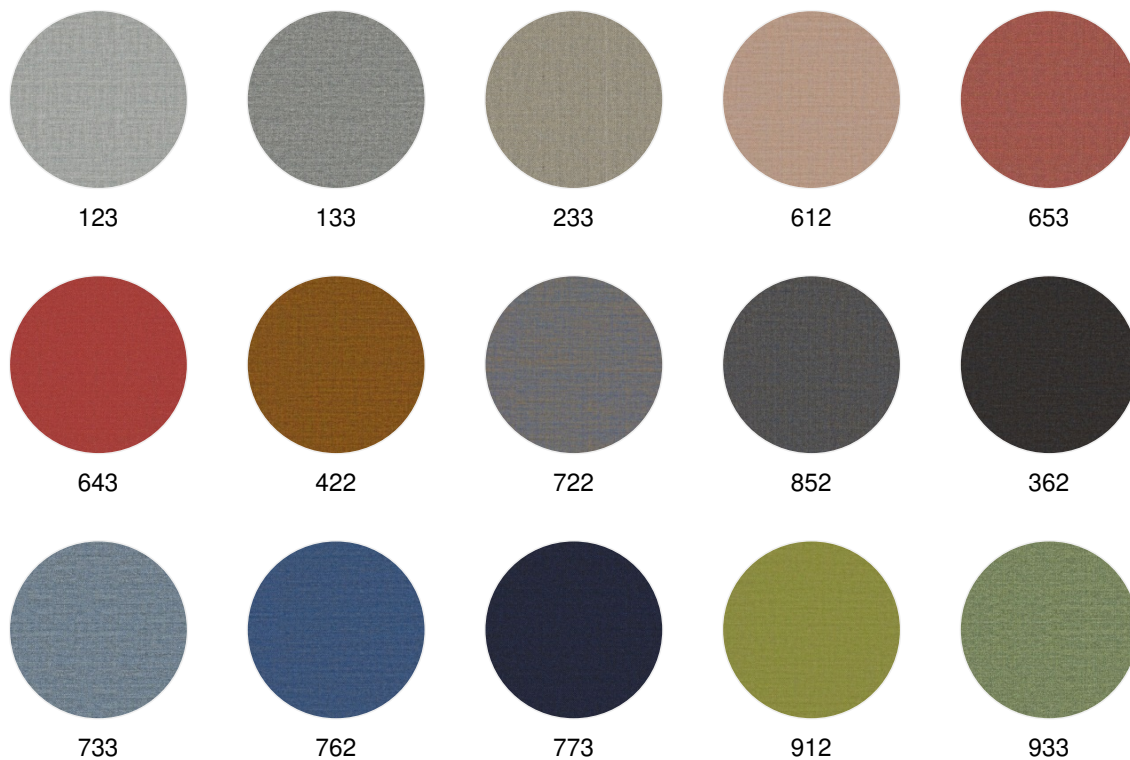
- Vestiaire pour les concepts de bureau où les postes de travail ne sont pas nominatifs
- Avec une barre de rangement et/ou une armoire avec des casiers se fermant à clé
- L'armoire est constituée de dix, quinze ou vingt casiers
- Vestiaire indépendant, avec au choix plus ou moins de casiers privés
- Acoustique : basic + premium
- Disponible en plusieurs largeurs

Dimensions

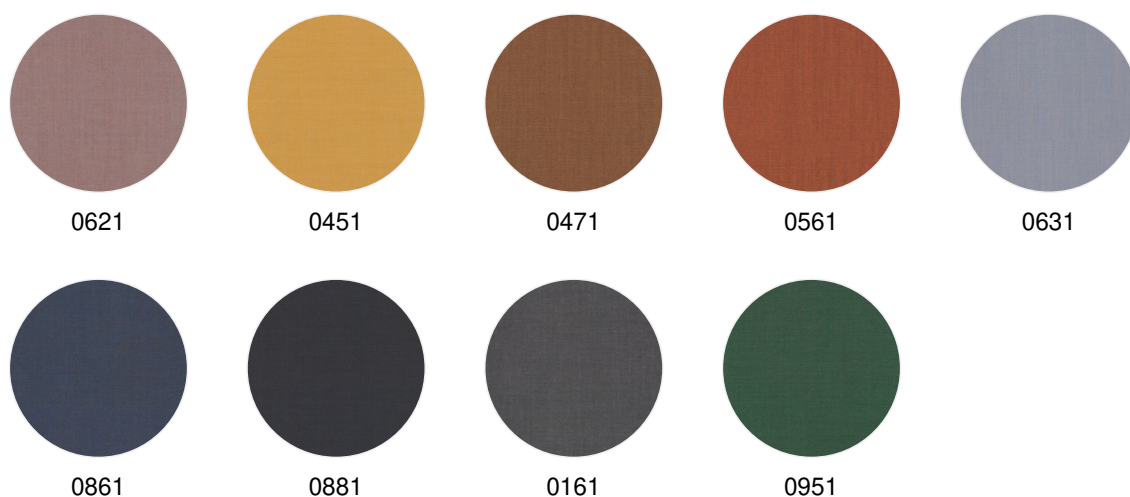


Couleurs et matières

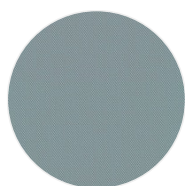
Tissus: Kvadrat Remix 3 (PG 21)



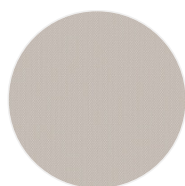
Tissus: Kvadrat Atlas (PG 21)



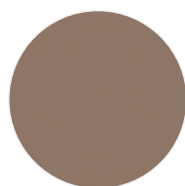
Tissus: Kvadrat Steelcut Trio 3 (PG 22)



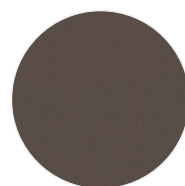
713



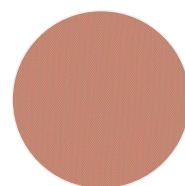
213



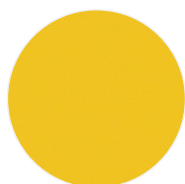
426



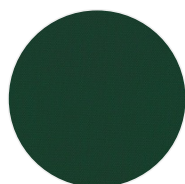
276



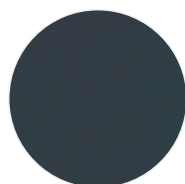
515



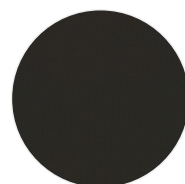
446



976

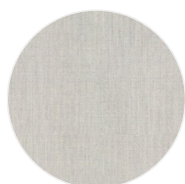


883

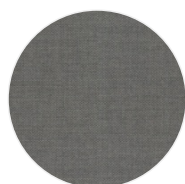


383

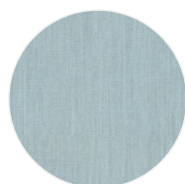
Tissus: Kvadrat Fiord 2 (PG 22)



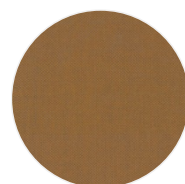
101



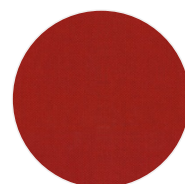
151



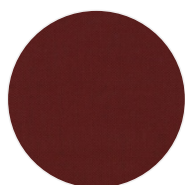
721



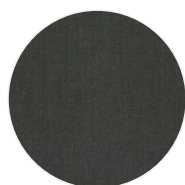
451



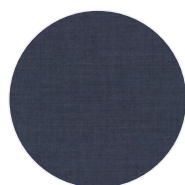
571



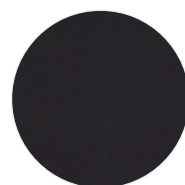
581



971

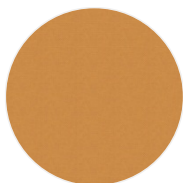


771

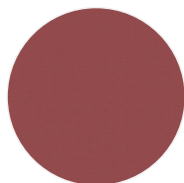


981

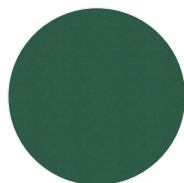
Tissus: Kvadrat Field 2 (Tissu fonctionnel) (NF P 92 507 M1) (PG 22)



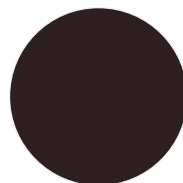
0463



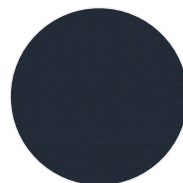
0643



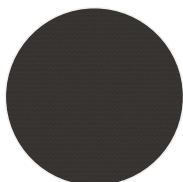
0963



0693

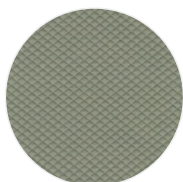


0782

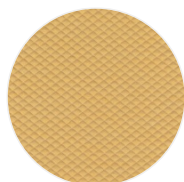


0182

Tissus: Kvadrat Febrik Mosaic 2 (PG 23)



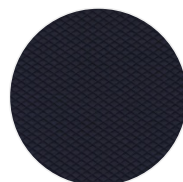
0922



0422



0682

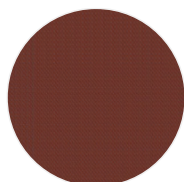


0692

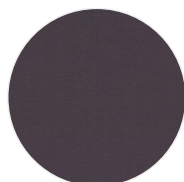
Tissus: Kvadrat Febrik Plecto (PG 23)



0224



0564

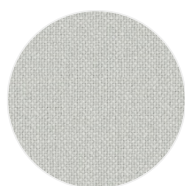


0654

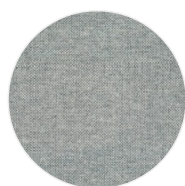


0984

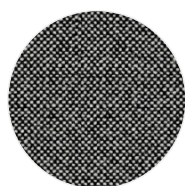
Tissus: Kvadrat Hallingdal 65 (PG 23)



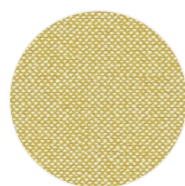
0103



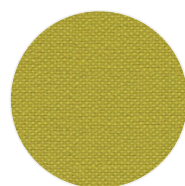
0116



0166



0407



0420

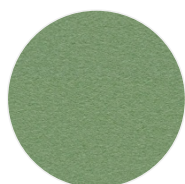


0687

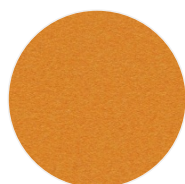


0764

Tissus: Kvadrat Divina 3 (PG 23)



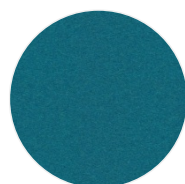
0856



0444



0584



0893

Tissus: Kvadrat Divina Melange 3 (PG 23)



0260

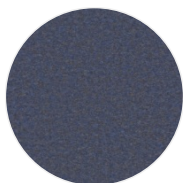


0567



0747

Tissus: Kvadrat Divina MD (PG 23)



0753



0813

Tissus: Kvadrat Coda 2 (PG 26)



116



442

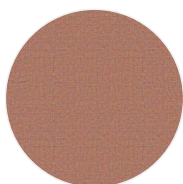


962

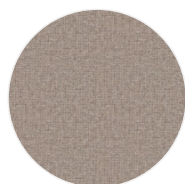


382

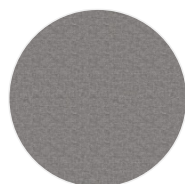
Tissus: Camira Carlow (PG 20)



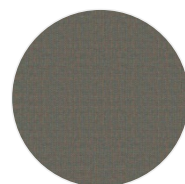
CLW06



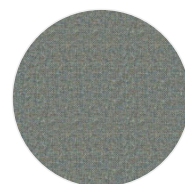
CLW04



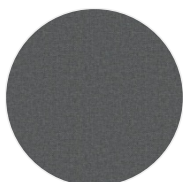
CLW01



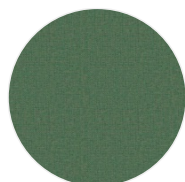
CLW17



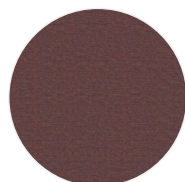
CLW09



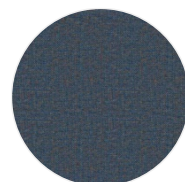
CLW23



CLW20

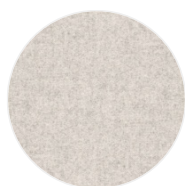


CLW08

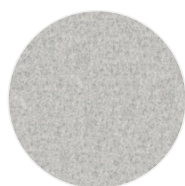


CLW12

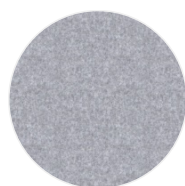
Tissus: Camira Blazer (PG 21)



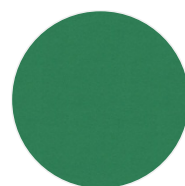
CUZ2Q



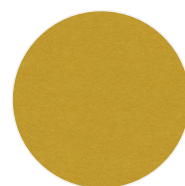
CUZ28



CUZ1E



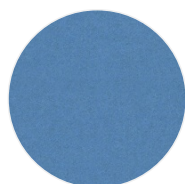
CUZ3A



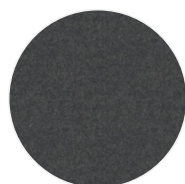
CUZ2W



CUZ21

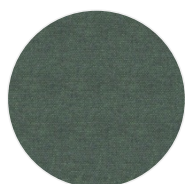


CUZ1V

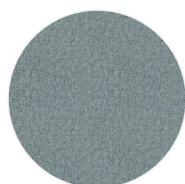


CUZ67

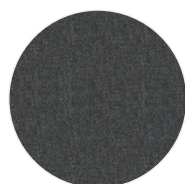
Tissus: Camira Mainline Flax (PG 21)



MLF32



MLF22

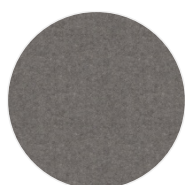


MLF16



MLF23

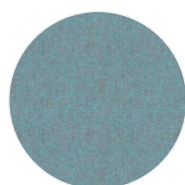
Tissus: Camira Synergy (PG 21)



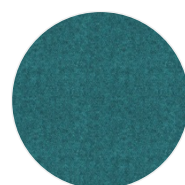
LDS35



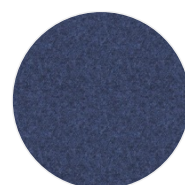
LDS46



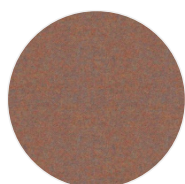
LDS56



LDS59



LDS62



LDS76



LDS77

Revêtements: Bois véritable



érable naturel



érable huilé



chêne blanchi à
la chaux



chêne blanchi à
la chaux huilé



chêne naturel



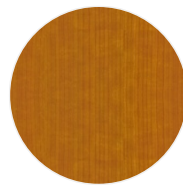
chêne huilé



hêtre naturel



cerisier



cerisier huilé



noyer



noyer huilé



chêne fumé



chêne noir

Revêtements: Mélamine



blanc atlas



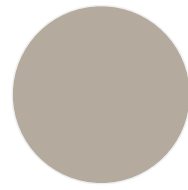
blanc crème



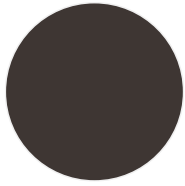
blanc soft



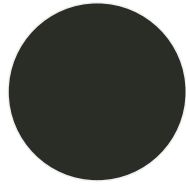
gris lumière



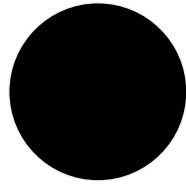
Gris soie



brun gris



graphite



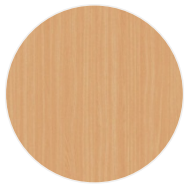
noir



imitation érable



chêne claire



hêtre claire

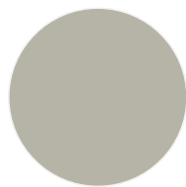
Revêtements: laque



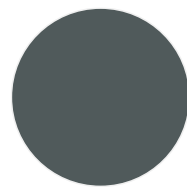
blanc
signalisation
(RAL 9016)



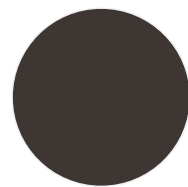
blanc crème
(RAL 9001)



gris soie
(RAL 7044)



gris fer
(RAL 7011)



brun gris
(RAL 8019)

