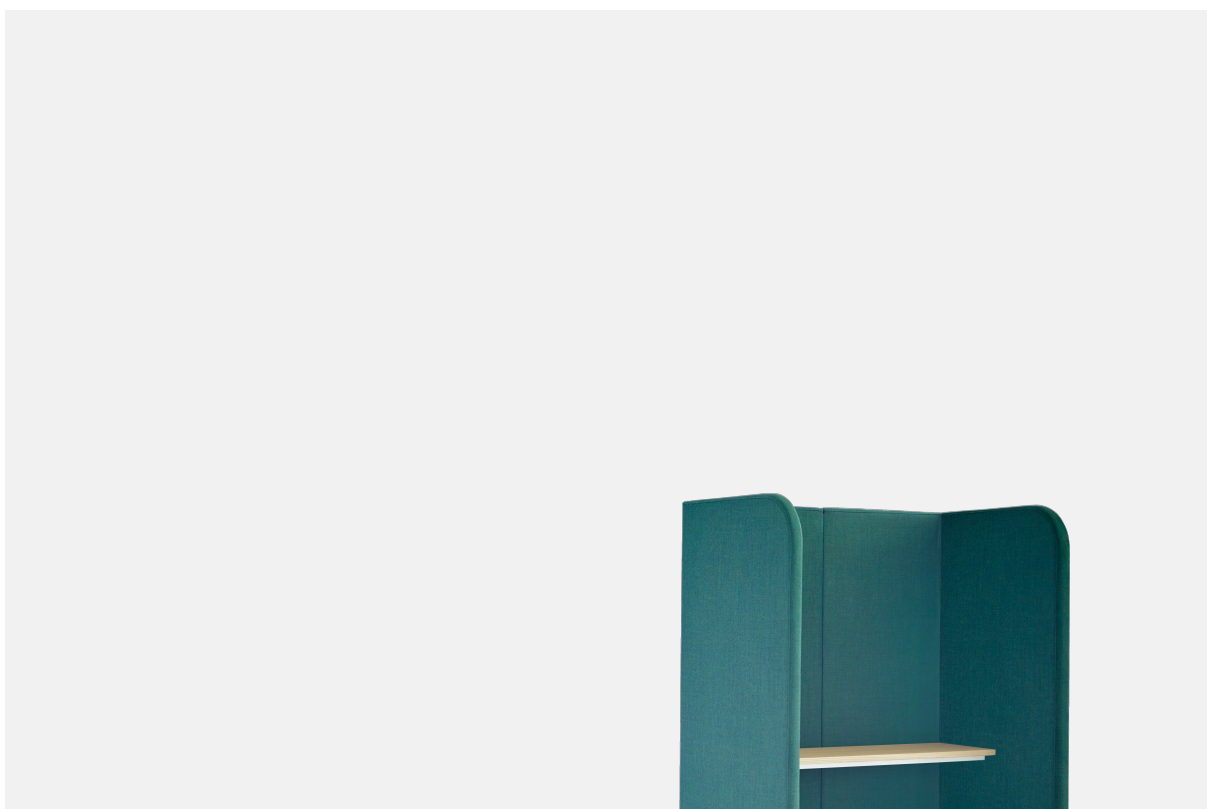


# Systeme de cloisons paravento hub Cabine téléphonique

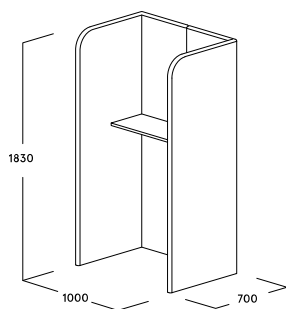


# Caractéristiques du produit

- Ce module de cabine téléphonique offre une séparation visuelle et acoustique
- Acoustique : basic + premium
- Avec tablette en hauteur debout
- Hauteur : 1830 mm (5 HC\*)

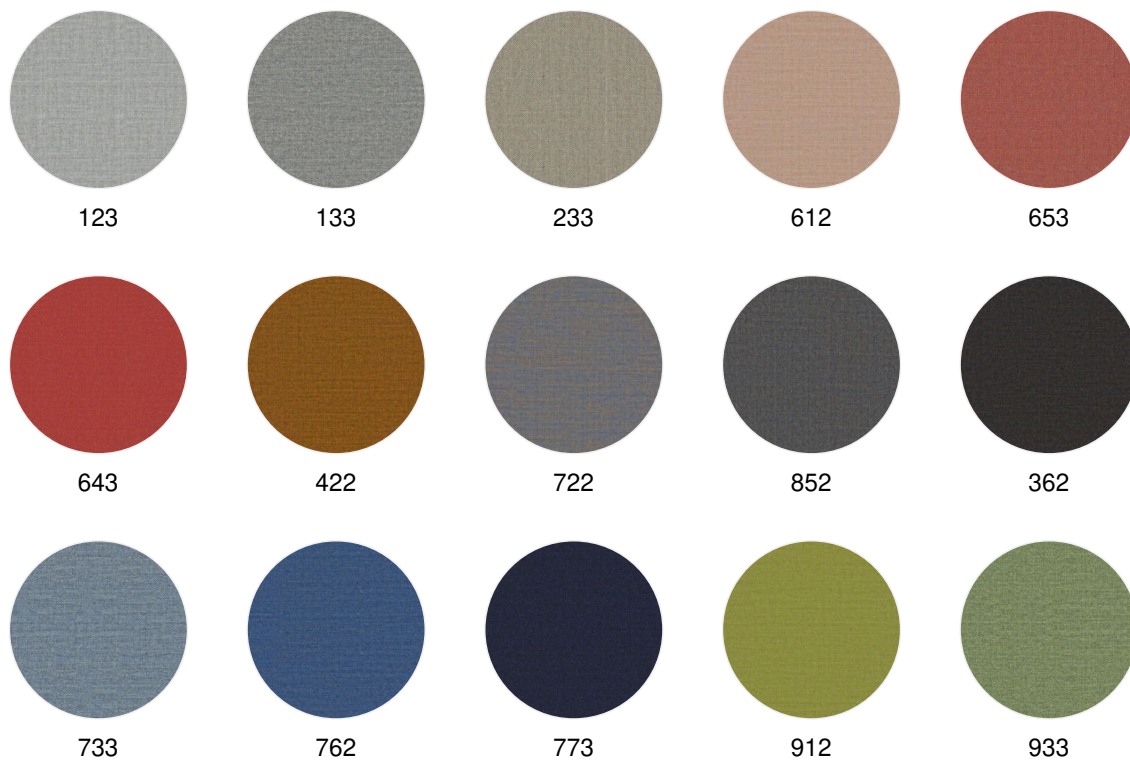
\*HC= hauteur de classeur

# Dimensions

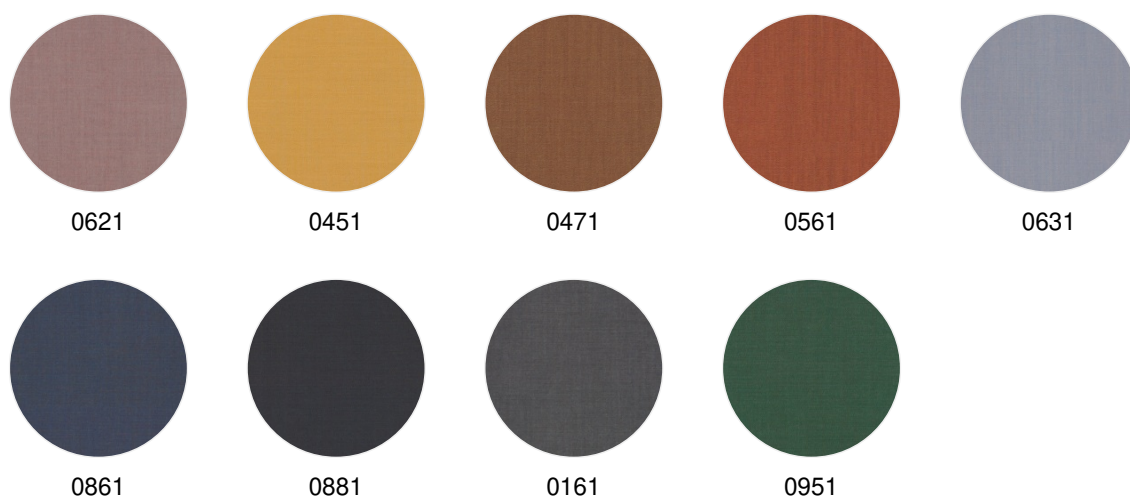


# Couleurs et matières

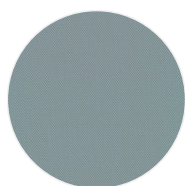
## Tissus: Kvadrat Remix 3 (PG 21)



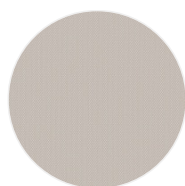
## Tissus: Kvadrat Atlas (PG 21)



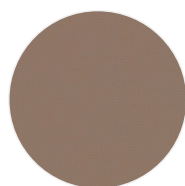
**Tissus: Kvadrat Steelcut Trio 3 (PG 22)**



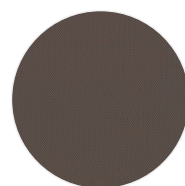
713



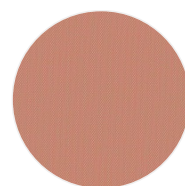
213



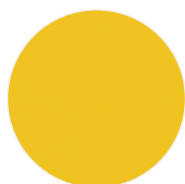
426



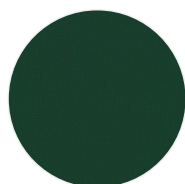
276



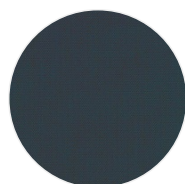
515



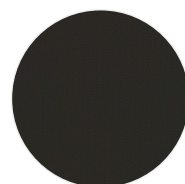
446



976

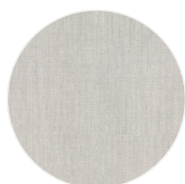


883

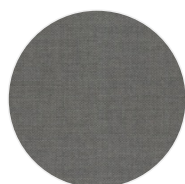


383

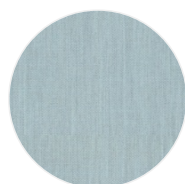
**Tissus: Kvadrat Fiord 2 (PG 22)**



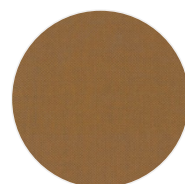
101



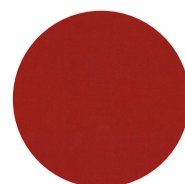
151



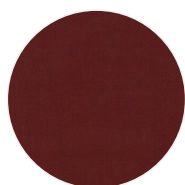
721



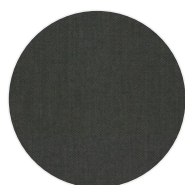
451



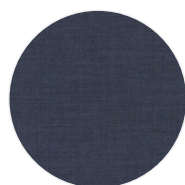
571



581



971

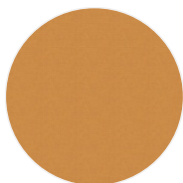


771

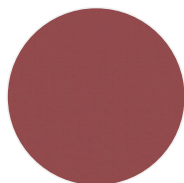


981

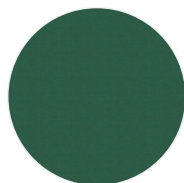
**Tissus: Kvadrat Field 2 (Tissu fonctionnel) (NF P 92 507 M1) (PG 22)**



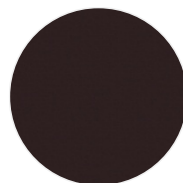
0463



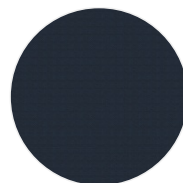
0643



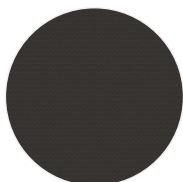
0963



0693

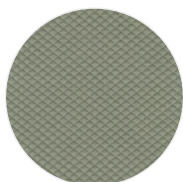


0782

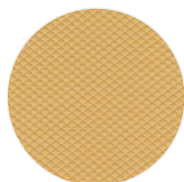


0182

**Tissus: Kvadrat Febrik Mosaic 2 (PG 23)**



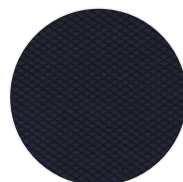
0922



0422



0682

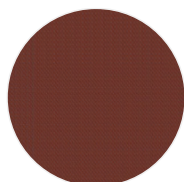


0692

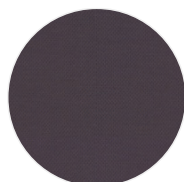
**Tissus: Kvadrat Febrik Plecto (PG 23)**



0224



0564



0654

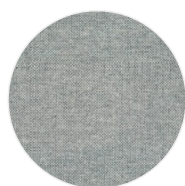


0984

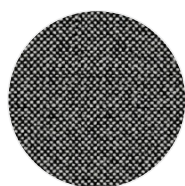
**Tissus: Kvadrat Hallingdal 65 (PG 23)**



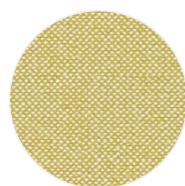
0103



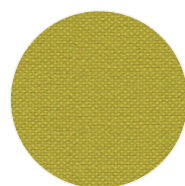
0116



0166



0407



0420

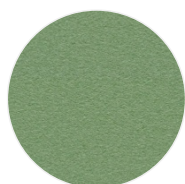


0687

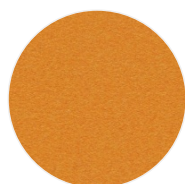


0764

**Tissus: Kvadrat Divina 3 (PG 23)**



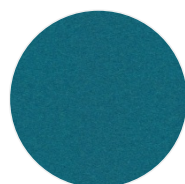
0856



0444

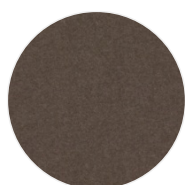


0584



0893

**Tissus: Kvadrat Divina Melange 3 (PG 23)**



0260

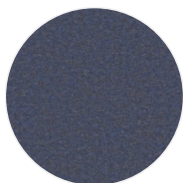


0567



0747

**Tissus: Kvadrat Divina MD (PG 23)**



0753



0813

**Tissus: Kvadrat Coda 2 (PG 26)**



116



442

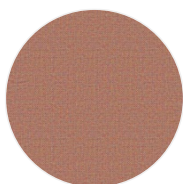


962

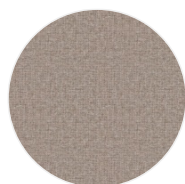


382

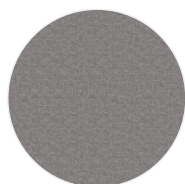
**Tissus: Camira Carlow (PG 20)**



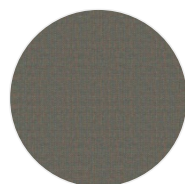
CLW06



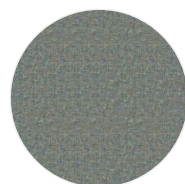
CLW04



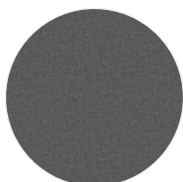
CLW01



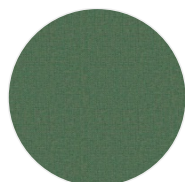
CLW17



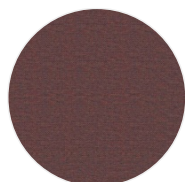
CLW09



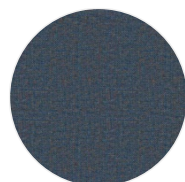
CLW23



CLW20



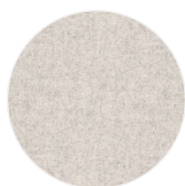
CLW08



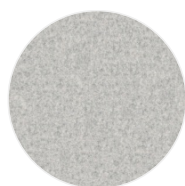
CLW12



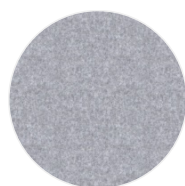
**Tissus: Camira Blazer (PG 21)**



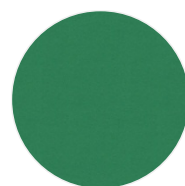
CUZ2Q



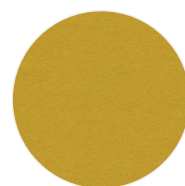
CUZ28



CUZ1E



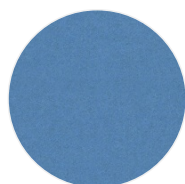
CUZ3A



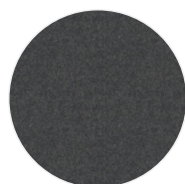
CUZ2W



CUZ21

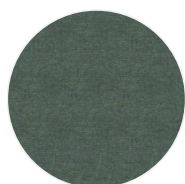


CUZ1V

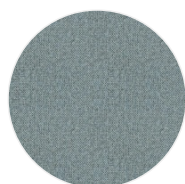


CUZ67

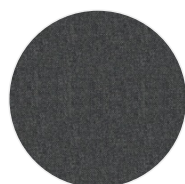
**Tissus: Camira Mainline Flax (PG 21)**



MLF32



MLF22

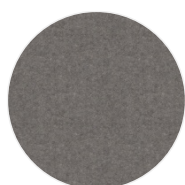


MLF16



MLF23

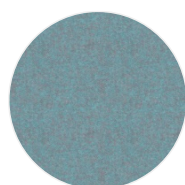
**Tissus: Camira Synergy (PG 21)**



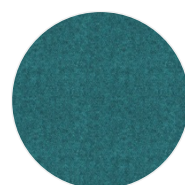
LDS35



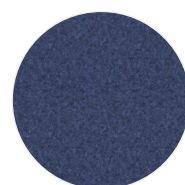
LDS46



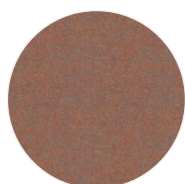
LDS56



LDS59



LDS62



LDS76



LDS77

## Revêtements: Bois véritable



érable naturel



érable huilé



chêne blanchi à  
la chaux



chêne blanchi à  
la chaux huilé



chêne naturel



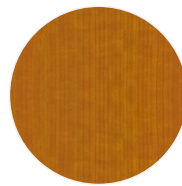
chêne huilé



hêtre naturel



cerisier



cerisier huilé



noyer



noyer huilé



chêne fumé



chêne noir

## Revêtements: Mélamine



blanc atlas



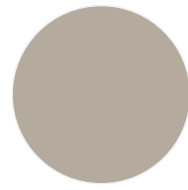
blanc crème



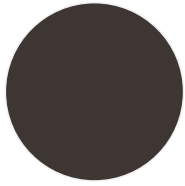
blanc soft



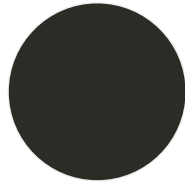
gris lumière



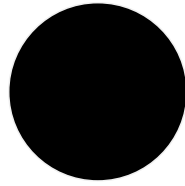
Gris soie



brun gris



graphite



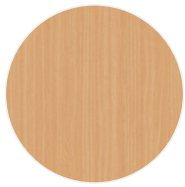
noir



imitation érable



chêne claire



hêtre claire

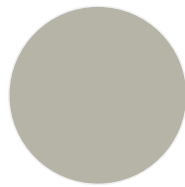
## Revêtements: laque



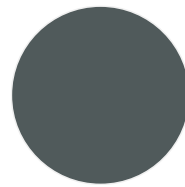
blanc  
signalisation  
(RAL 9016)



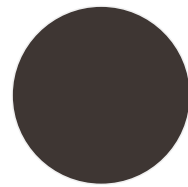
blanc crème  
(RAL 9001)



gris soie  
(RAL 7044)



gris fer  
(RAL 7011)



brun gris  
(RAL 8019)

